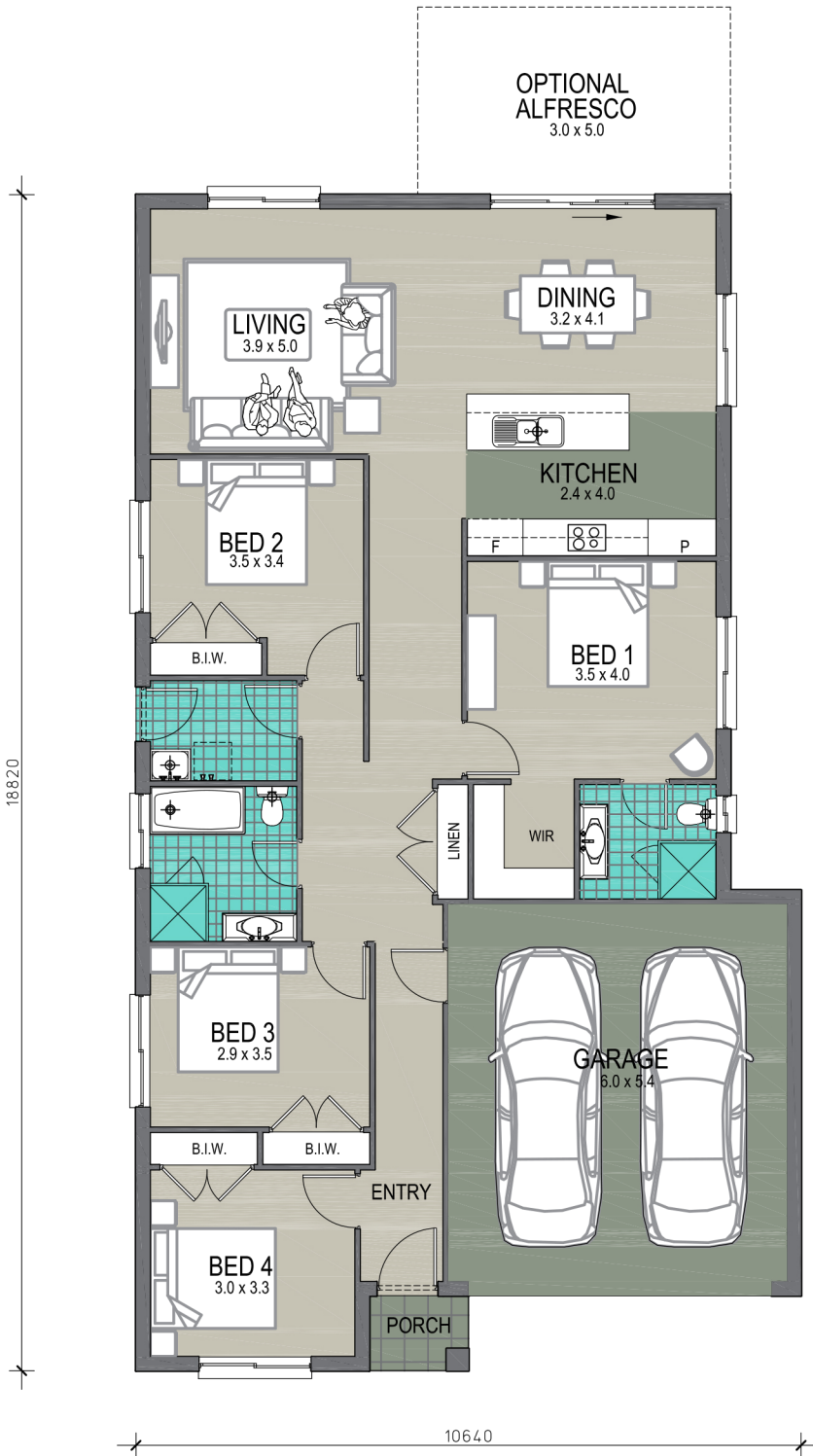


Protea 3

To suit 12.5m wide block



Areas:

Living Area:	143.70m ²
Garage:	35.90m ²
Porch:	1.90m ²
Total Area:	181.50m²
Squares:	19.50
Opt. Alfresco:	15.00m ²

- ✓ Ask about the optional rear alfresco
- ✓ Adaptable to suit 12.5m Zero Allotment block width