

# Woodridge Express.



## **Allow yourself to imagine the lifestyle you've always wanted, in the home you deserve!**

A spacious, open-plan living area is at the heart of this functional family home. Within the Woodridge 216, you can prepare meals in the stylish central kitchen, entertain guests in the formal dining area, watch a family movie or escape to the covered alfresco for a relaxing glass of wine. There's also a separate lounge or media room at the front of the home. Four spacious bedrooms are well separated to provide peace and privacy throughout.

The Woodridge Express offers individually crafted facades that will inspire you by providing a choice of homes that reflect your personal lifestyle and preferences.

Call **132 789**  
or visit **[gjgardner.com.au](http://gjgardner.com.au)**

Welcome **home.**

**G.J. Gardner.** **HOMES**





CLASSIC



BEACH



EXECUTIVE



HAMPTONS



MANOR



RESORT



TRADITIONAL



URBAN

## Woodridge facade options.

G.J. Gardner's tailored facades give you the opportunity to personalise your home. With Classic, Beach, Executive, Hamptons, Manor, Resort, Traditional and Urban facades to choose from, you can bring your home to life, making it as individual as you are!

Images may depict fixtures, finishes and features not supplied by G.J. Gardner Homes. These items include planter boxes, retaining walls, water features, pergolas, screens and decorative landscaping items such as fencing and outdoor kitchens and barbecues.

## Woodridge 216.

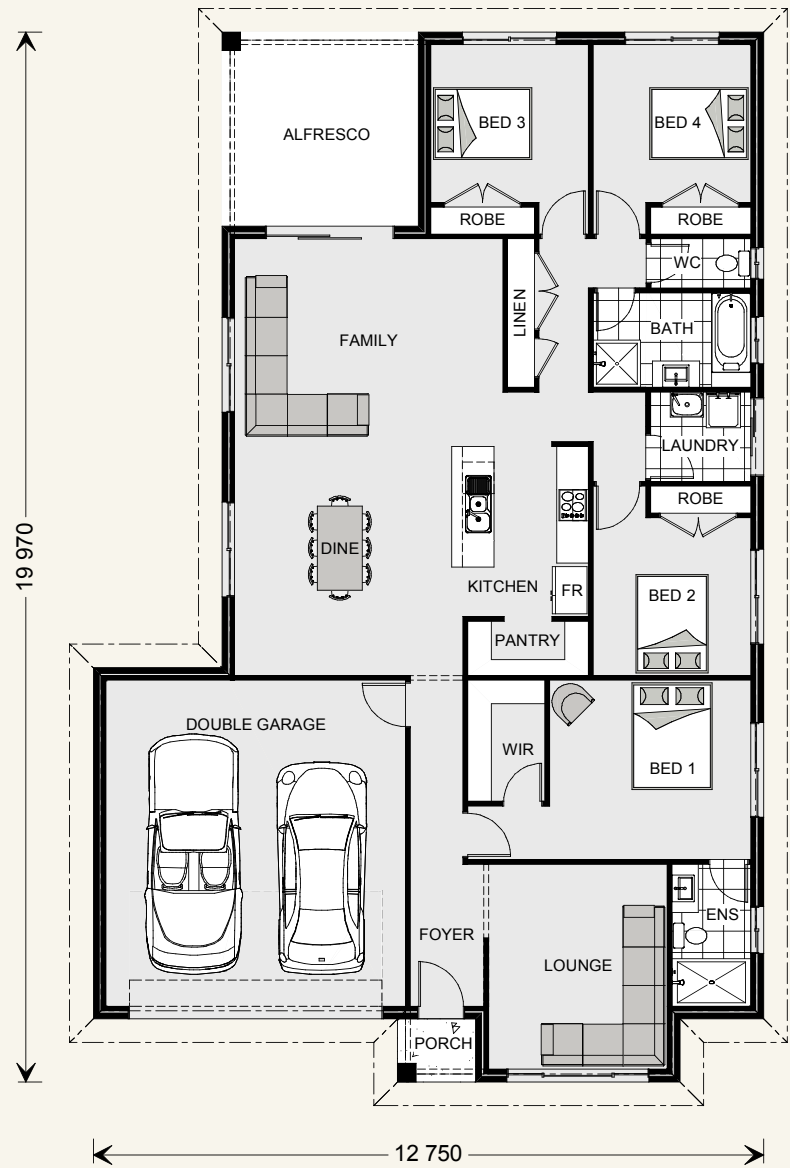


### FEATURES

- + Central, open-plan living
- + Separate lounge or media room
- + Four bedrooms, including ensuited master
- + Large linen closet, plenty of built-in storage
- + Covered alfresco area
- + Double garage

### SPECIFICATIONS

<b>Width:</b>	12.75 m
<b>Length:</b>	19.97 m
<b>Living:</b>	161.6 sqm
<b>Garage:</b>	38.9 sqm
<b>Alfresco:</b>	13.8 sqm
<b>Porch:</b>	1.8 sqm
<b>Total:</b>	216.1 sqm



\*Classic Floorplan Shown

### NOTES

---

---

---

---



---

**Locals always  
at hand.**

Designing and building your ideal home is an exciting experience, and when you partner with professional and established builders – G.J. Gardner Homes, the journey will be fulfilling and rewarding.



Internal photographs are from different G.J. Gardner Homes to those featured in this brochure.

Call **132 789**  
or visit **[gjgardner.com.au](http://gjgardner.com.au)**

**G.J. Gardner.** **HOMES**