



QUALITY BUILDERS SINCE 1984

ULTRA COSMOPOLITAN FACADE

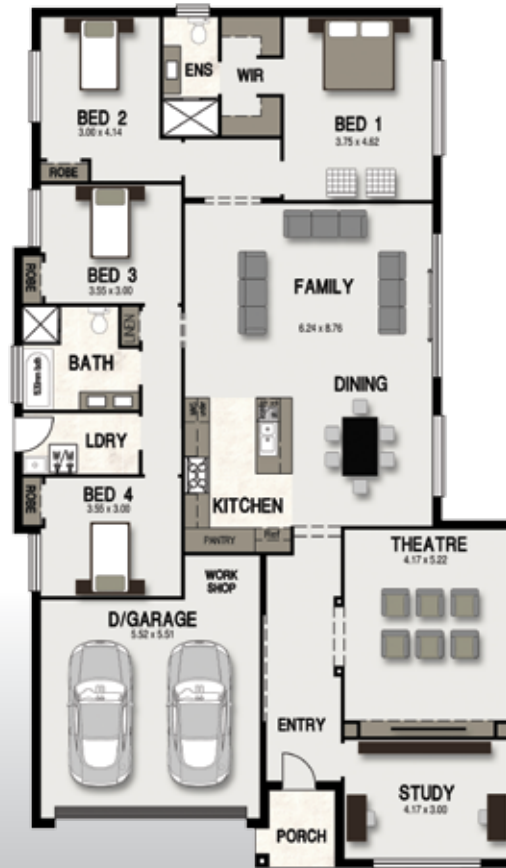
# TROPIC BIRD SERIES



# TROPIC BIRD SERIES 1

**WIDTH:** 12.69m  
**LENGTH:** 21.60m  
**SIZE:** 237.05 sqm

**25.48 squares**



## SERIES 1 & 2 FACADES



TRADITIONAL FACADE



CLASSIC FACADE



COSMOPOLITAN FACADE



FEDERATION FACADE

# TROPIC BIRD

SERIES 2

**WIDTH:** 12.69m

**LENGTH:** 21.60m

**SIZE:** 247.00 sqm

**26.55 squares**



Artists Impression

ULTRA COSMOPOLITAN FACADE



Artists Impression

UPRISE FACADE



Artists Impression

MODERN FACADE



Artists Impression

ULTRA CLASSIC FACADE

# TROPIC BIRD SERIES 3

**WIDTH:** 12.69m  
**LENGTH:** 21.60m  
**SIZE:** 239.22 sqm

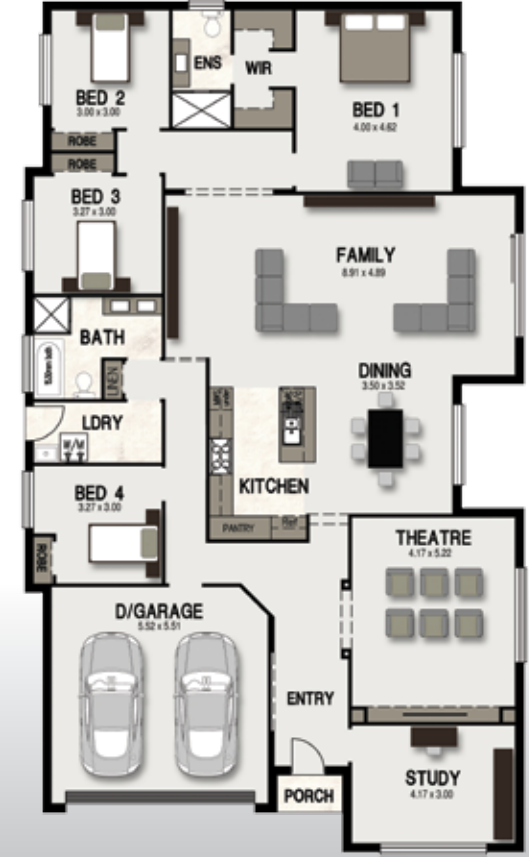
**25.72 squares**



# TROPIC BIRD SERIES 4

**WIDTH:** 12.69m  
**LENGTH:** 21.60m  
**SIZE:** 249.15 sqm

**26.79 squares**



## SERIES 3, 4 & 5 FACADES



TRADITIONAL FACADE



MODERN FACADE



CLASSIC FACADE



FEDERATION FACADE

# TROPIC BIRD

SERIES 5

**WIDTH:** 12.69m

**LENGTH:** 19.98m

**SIZE:** 223.17 sqm

**24.00 squares**



Artists Impression

IRON BARK FACADE



Artists Impression

OAKWOOD FACADE

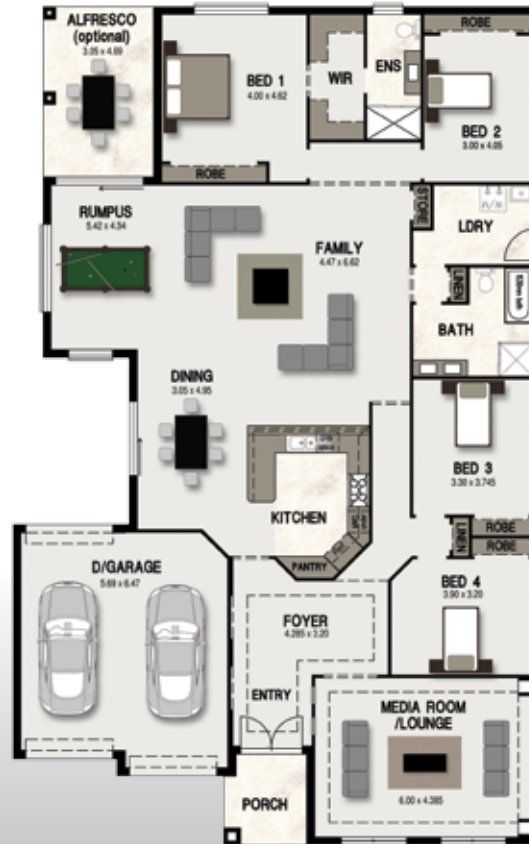
# TROPIC BIRD SERIES 6

**WIDTH:** 14.525m

**LENGTH:** 23.08m

**SIZE:** 300.28 sqm  
(includes optional  
Alfresco)

**32.28 squares**



## SERIES 6 FACADES



TRADITIONAL FACADE



SICILIAN FACADE



# Eagle Homes

Est. 1984

T 02 9822 4755 F 02 9822 5468

Head Office 7-9 Norfolk Street, Liverpool 2170  
info@eaglehomes.com.au

[www.eaglehomes.com.au](http://www.eaglehomes.com.au)

Eagle Homes, a division of Ultra Modern Developments Pty. Ltd  
Lic. No. 66931C ACN 069 518 770

Proud member of

