

TEMPUS

SHOWN WITH UPGRADED EDGE FACADE

Double Storey Collection



Image Illustrative Only



MASTERTON

www.masterton.com.au or 1300 44 66 37

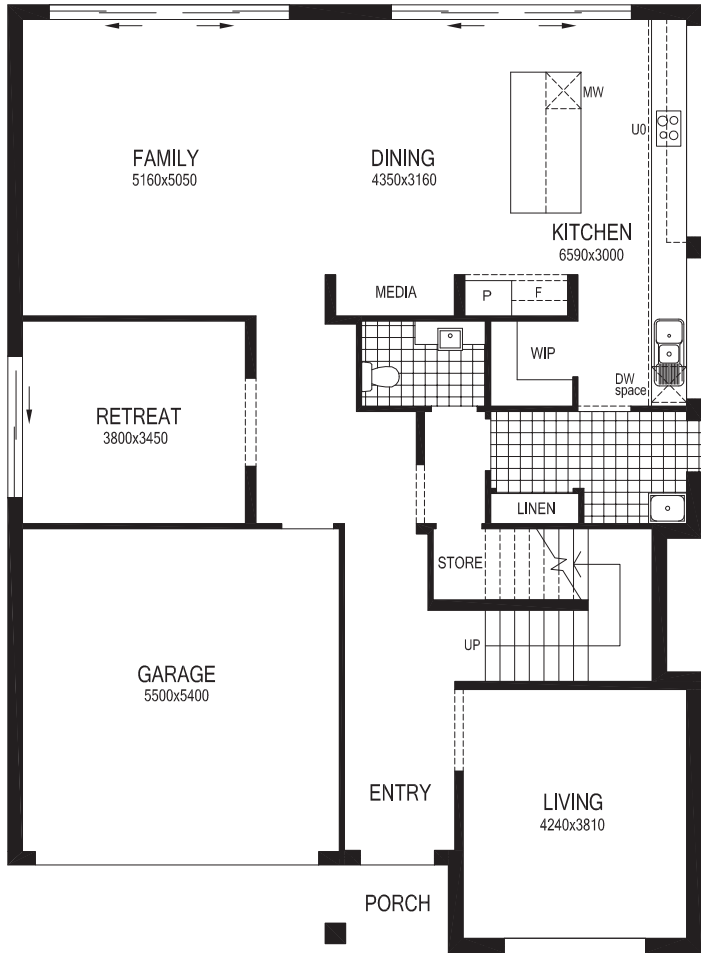
Jim wouldn't have it any other way

Images in this brochure may depict items not supplied by Masterton which include, but are not limited to, landscaping, pathways, driveways, decks, pergolas, fencing, letter boxes, pool, water features and BBQ. Images may depict upgraded items which include, but are not limited to, fireplaces, window furnishings, light fittings, floor coverings, alarm systems, air conditioning, doors and feature tiling. Alternative facade upgrades available. No applied finishes are included such as render, moroka, bag and paint, stack stone or tiles. These are optional upgrades. Please contact a Sales Consultant for more information.

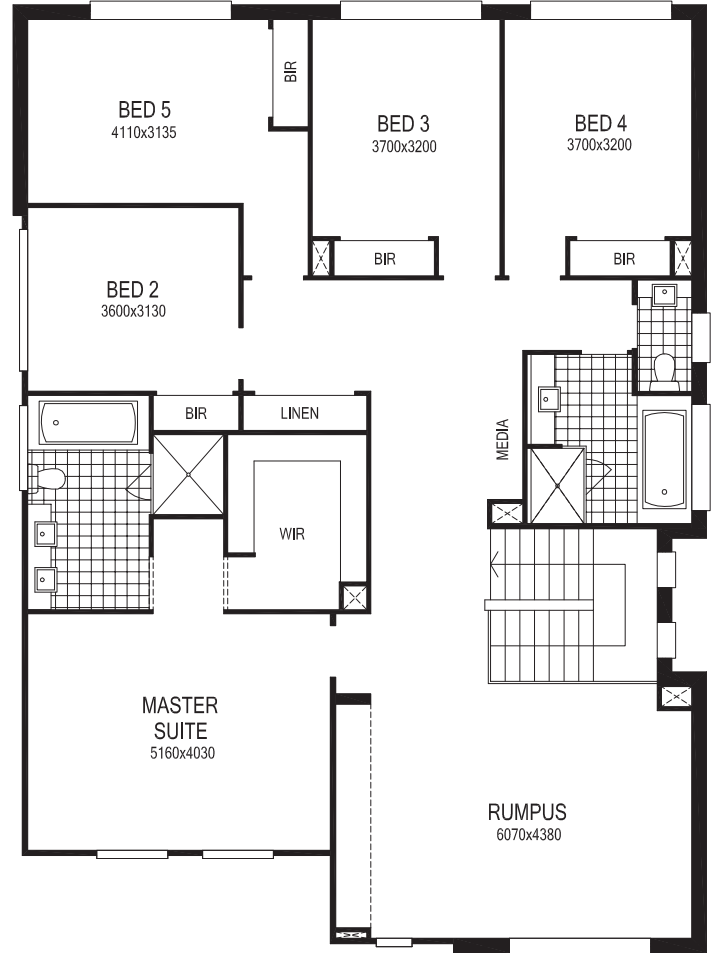
TEMPUS GRANDE 5 BED

SHOWN WITH TRADITIONAL FACADE

F 5/6 3 2



Ground Floor



First Floor

38.73 squares

Total Area 359.82m²

Ground Floor Living 146.03m², First Floor Living 178.61m²

Garage 32.37m², Porch 2.81m²

Ground Floor Width 11.82m, Overall Depth 16.16m

First Floor Width 11.82m, Overall Depth 16.16m

Please see conditions on back page

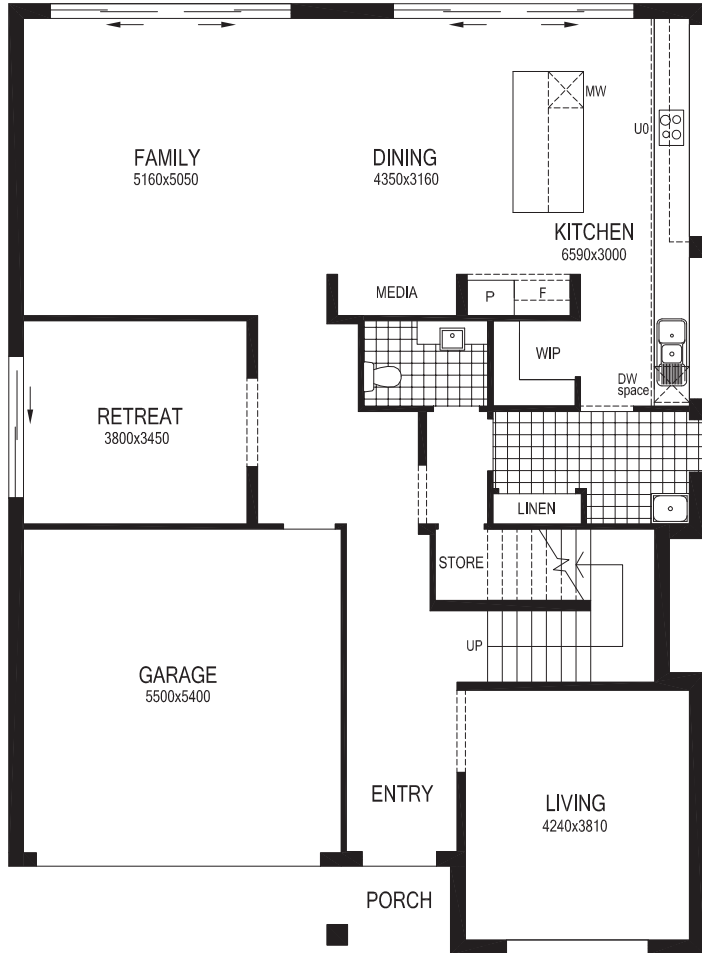


MASTERTON

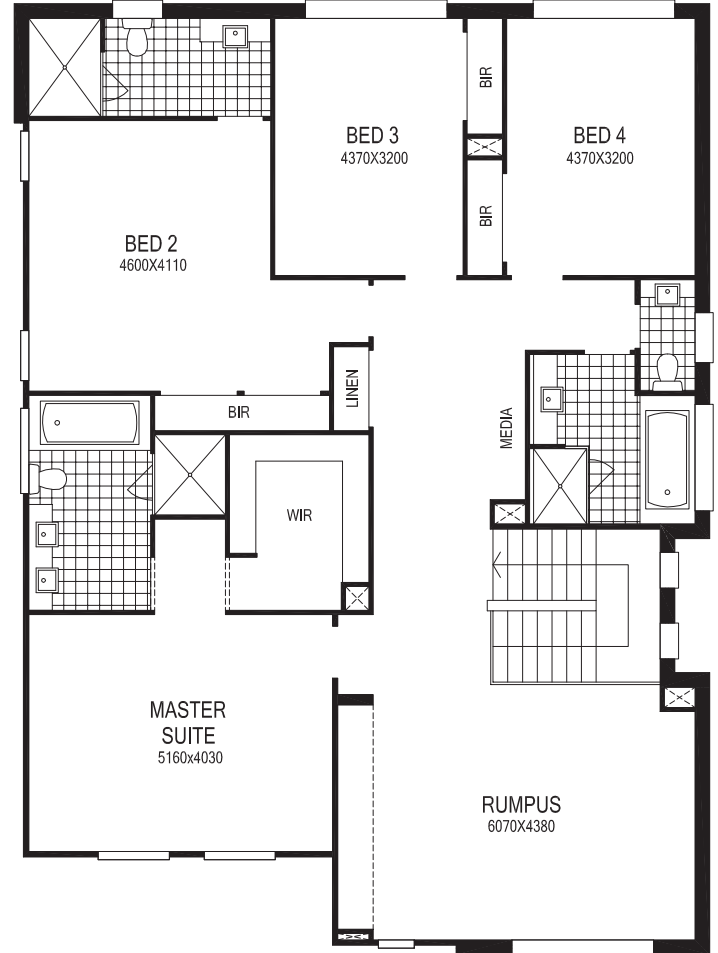
TEMPUS GRANDE 4 BED

SHOWN WITH TRADITIONAL FACADE

F 4/5 3 2



Ground Floor



First Floor

38.71 squares

Total Area 359.57m²

Ground Floor Living 146.03m², First Floor Living 178.36m²

Garage 32.37m², Porch 2.81m²

Ground Floor Width 11.82m, Overall Depth 16.16m

First Floor Width 11.82m, Overall Depth 16.16m

Please see conditions on back page

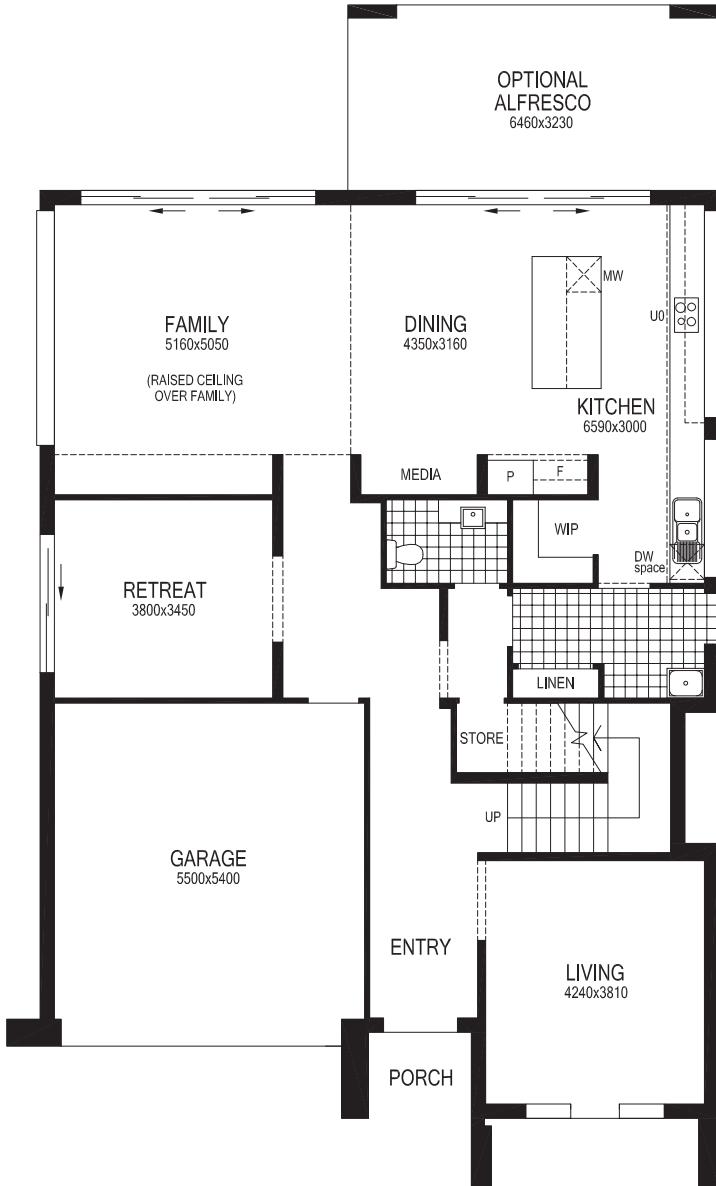


MASTERTON

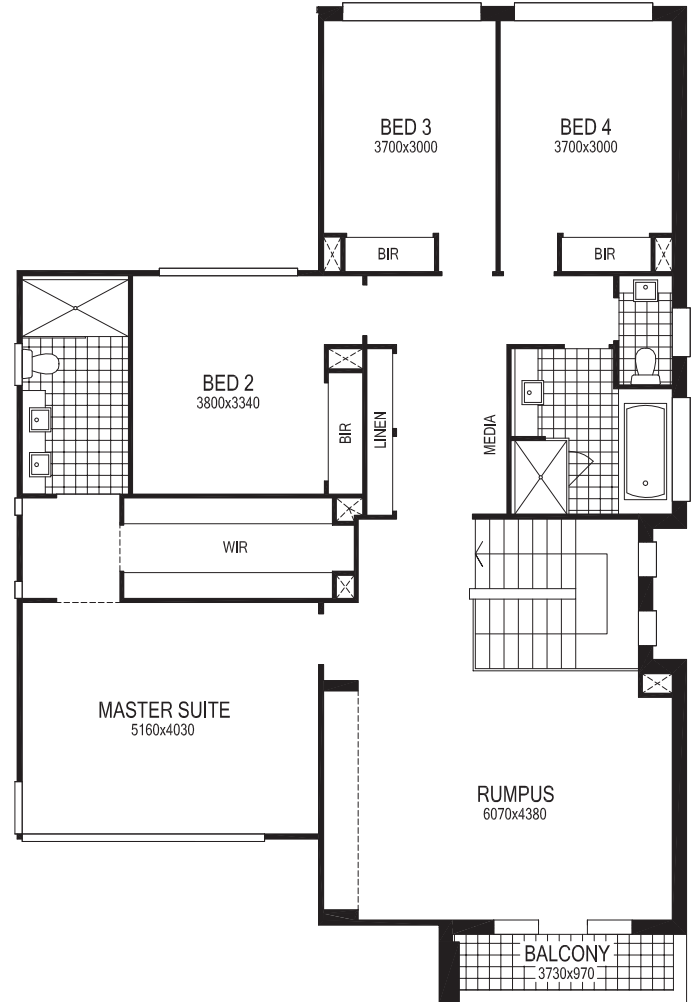
TEMPUS ELITE

SHOWN WITH UPGRADED EDGE FACADE

F 4/5 3 2



Ground Floor



First Floor

37.36 squares

Total Area 347.06m²

Ground Floor Living 146.87m², First Floor Living 153.88m²

Garage 33.91m², Porch 7.23m², Balcony 5.17m²

Ground Floor Width 12.40m, Overall Depth 17.36m

First Floor Width 11.66m, Overall Depth 17.36m

Please see conditions on back page

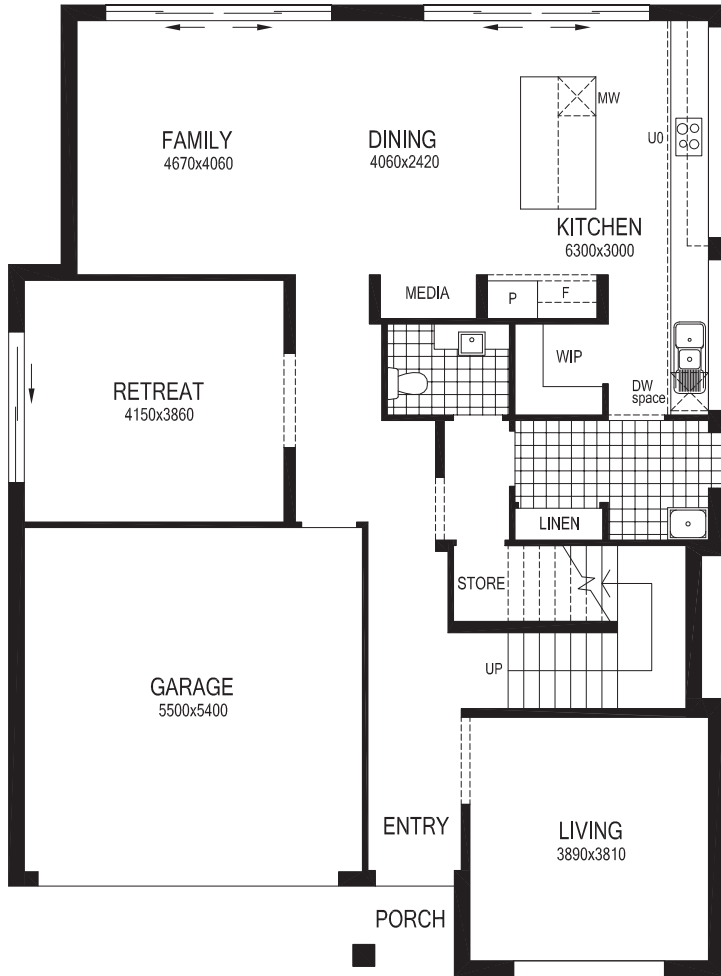


MASTERTON

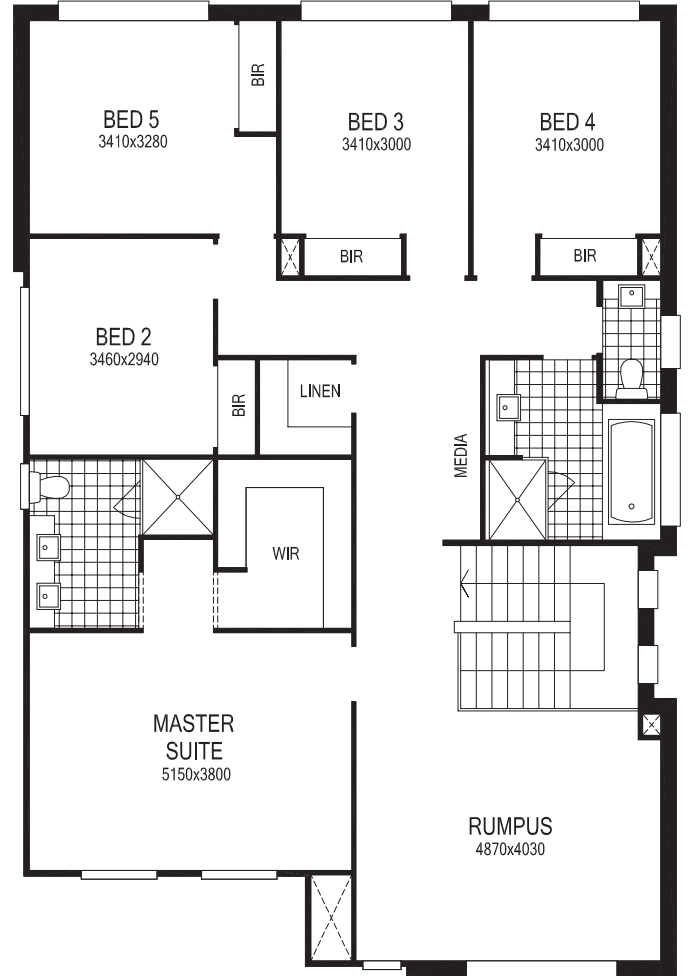
TEMPUS EXCLUSIVE

SHOWN WITH TRADITIONAL FACADE

5/6 3 2



Ground Floor



First Floor

34.36 squares

Total Area 319.18m²

Ground Floor Living 130.46m², First Floor Living 154.28m²

Garage 32.37m², Porch 2.07m²

Ground Floor Width 11.43m, Overall Depth 15.52m

First Floor Width 10.59m, Overall Depth 15.52m

Please see conditions on back page

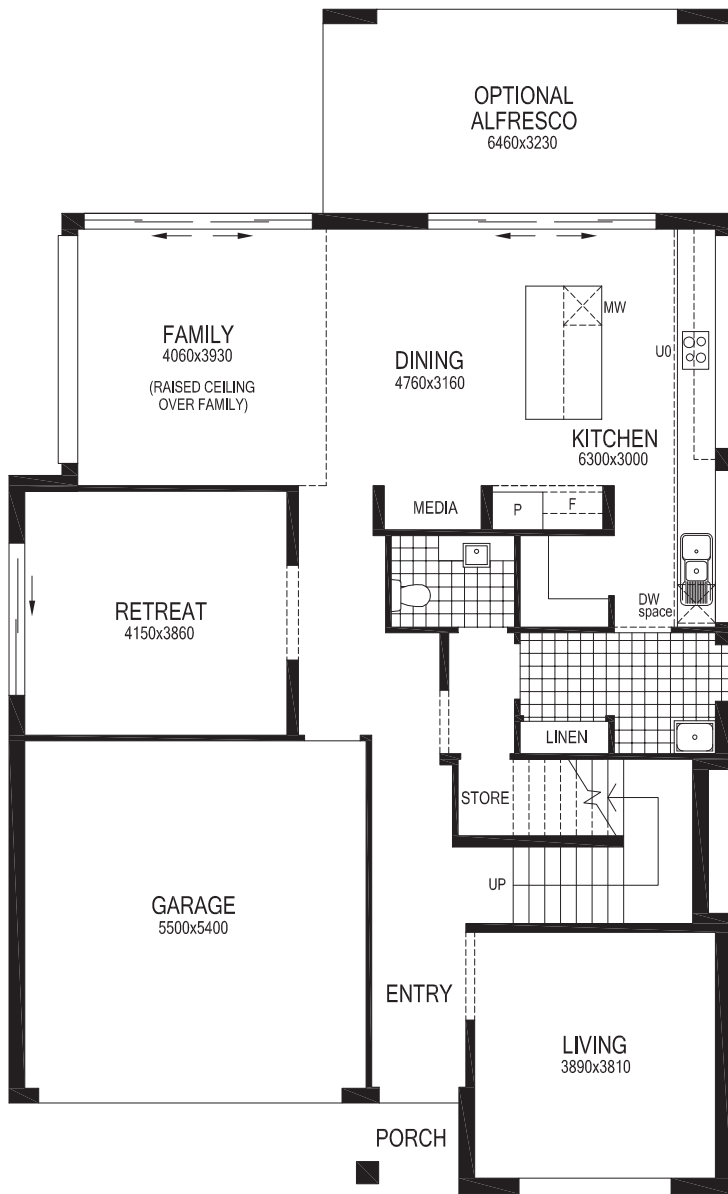


MASTERTON

TEMPUS PREMIER

SHOWN WITH TRADITIONAL FACADE

4/5  3  2



Ground Floor



First Floor

32.44 squares

Total Area 301.36m²

Ground Floor Living 130.46m², First Floor Living 136.46m²

Garage 32.37m², Porch 2.07m²

Ground Floor Width 11.43m, Overall Depth 15.52m

First Floor Width 10.45m, Overall Depth 15.52m

Please see conditions on back page

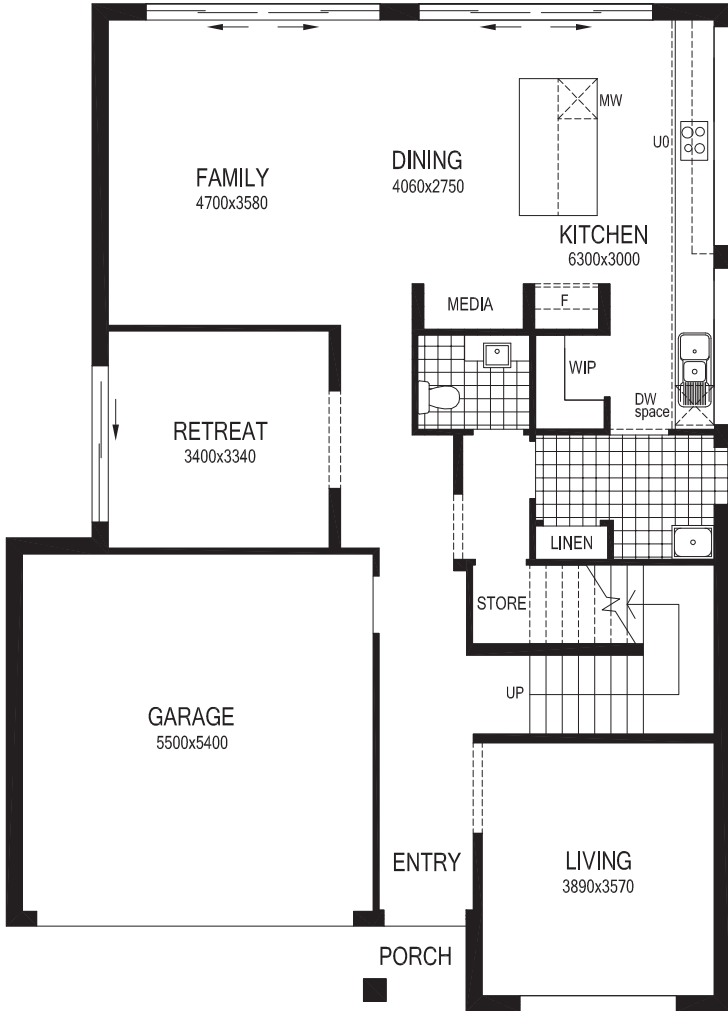


MASTERTON

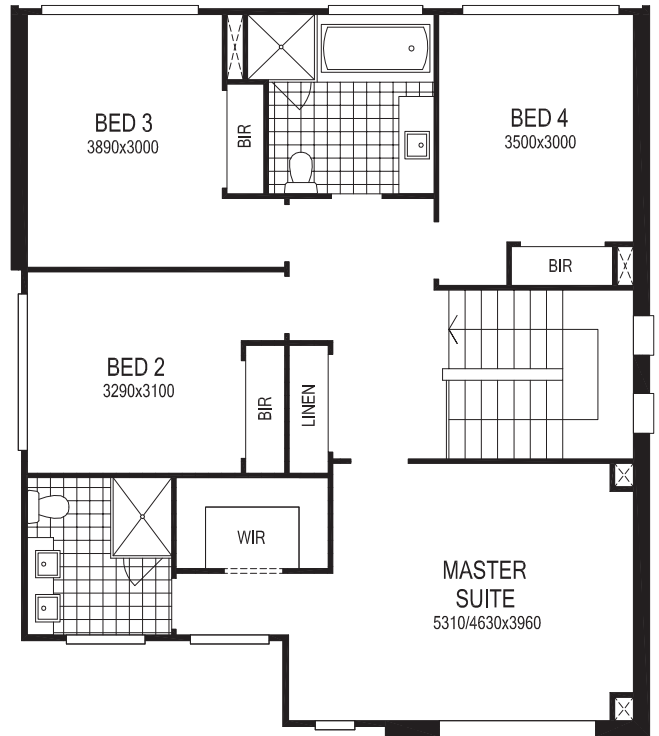
TEMPUS

SHOWN WITH TRADITIONAL FACADE

F 4/5  3  2



Ground Floor



First Floor

27.72 squares

Total Area 257.53m²

Ground Floor Living 120.15m², First Floor Living 102.85m²

Garage 32.70m², Porch 1.83m²

Ground Floor Width 11.15m, Overall Depth 15.52m

First Floor Width 9.83m, Overall Depth 11.21m

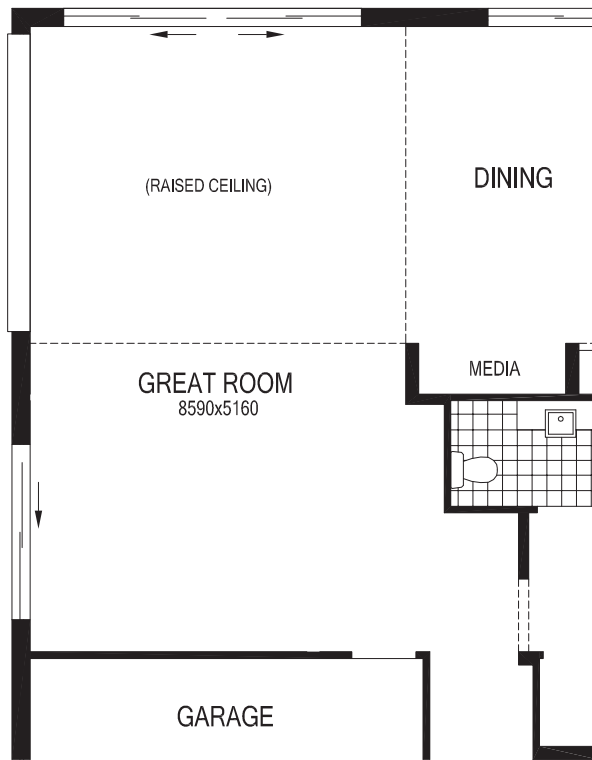
Please see conditions on back page



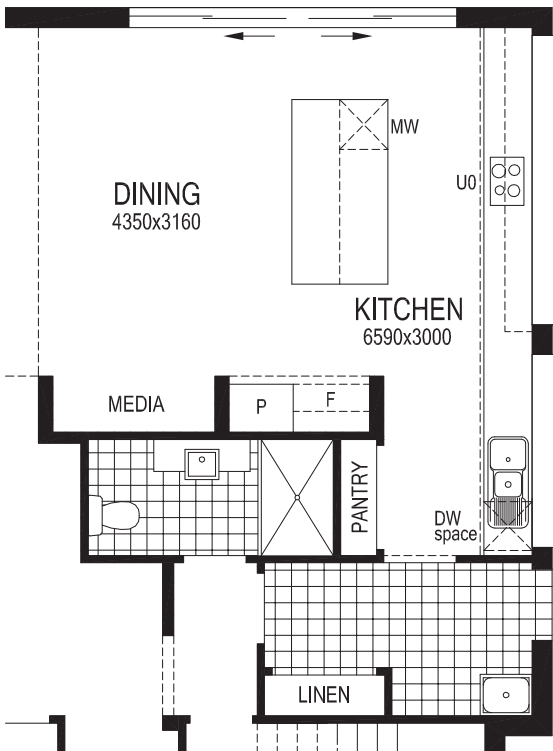
MASTERTON

OPTIONAL/ALTERNATES

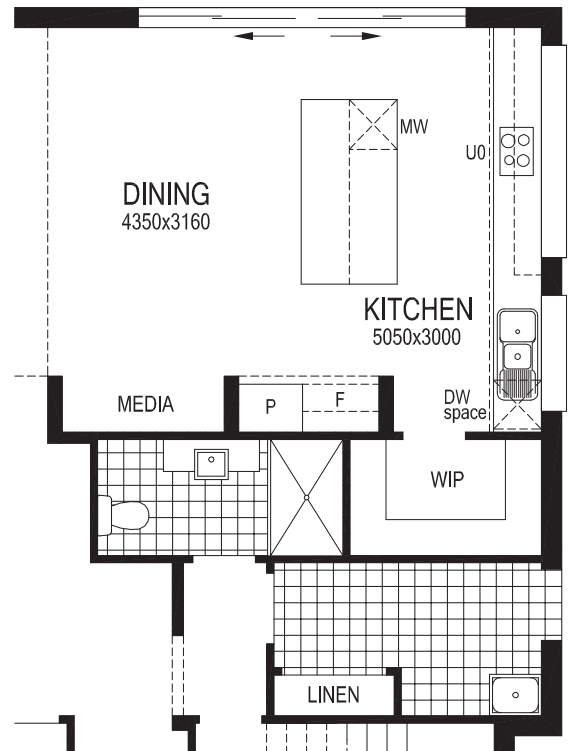
GREAT ROOM OPTION



SHOWER TO POWDER ROOM OPTION 1



SHOWER TO POWDER ROOM OPTION 2







ABOUT MASTERTON

JIM WOULDN'T HAVE IT ANY OTHER WAY

WE BUILT OUR REPUTATION ONE HOUSE AT A TIME

More than 50,000 homeowners have chosen a Masterton home since 1962. We're now one of the largest and most respected home builders in Australia, something we're very proud of and value enormously.

We've maintained our leadership in the industry with a design team that are continually developing new designs to meet the changing lifestyles and expectations of today's customers. Of course, we're continually incorporating and adapting to new building technologies, so that we live up to our promise of "Building Tomorrow's Homes, today"

MASTERTON DISPLAY VILLAGE

Many of our most popular designs are on show at our seven acre Warwick Farm Display Village, which is conveniently located on the Hume Highway at Warwick Farm.

Enjoy strolling through our landscaped gardens, inspecting your future home, and let one of our friendly and experienced staff help you with any questions you may have about your perfect new home.

COLOUR SELECTION STUDIO

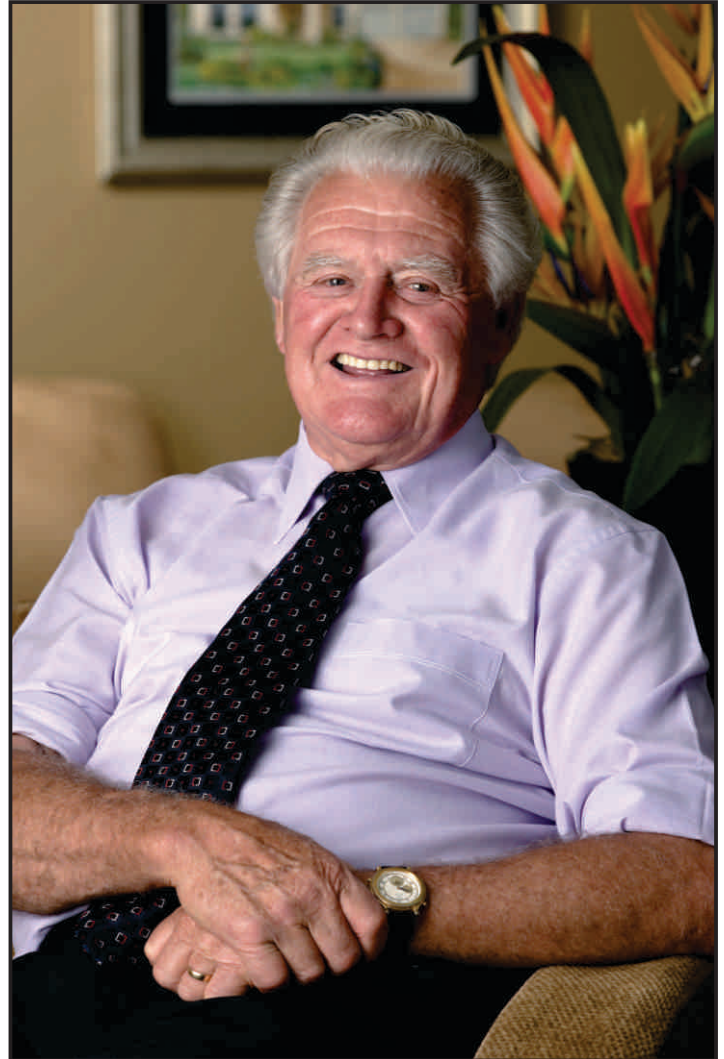
At our exciting style selection centre 'The Masterton Colour Selection Studio, at the Warwick Farm Display Village, finalise your external and internal choices with our professional in-house consultants, helping you with all the finishing touches that truly turn a house into your home.

These selections include bathroom and kitchen products, air conditioning, security systems, carpet, timber flooring, stairs and a lot more.

MASTERTON'S "KNOCK DOWN REBUILD"

Love the neighbourhood but tired of your house? If you own a house that's getting a little old and dull, why not replace it with a brand new Masterton Home on your existing block?

We'll give you all the advice you need, including the design of your new home and how to make more of the available area. One of our trained consultants will help develop the perfect solution for you.



Our Founder - Jim Masterton

MASTERTON
KDR
KNOCKDOWNREBUILD



MASTERTON

UPGRADE FACADE SELECTION

All floor plans can be mirror reversed



Allure



Edge 2



Esteem



Metro



Timeless



Traditional



Vibe

All floor plans can be mirror reversed

Masterton Display Village: Cnr Sappho Road & Hume Highway Warwick Farm NSW 2170

For your nearest display village visit www.masterton.com.au or call 1300 44 66 37

Conditions

Base price includes traditional facade. Alternative facade upgrades available. No applied finishes are included such as render, moroka, bag and paint, stack stone or tiles. These are optional upgrades. Images in this brochure may depict items not supplied by Masterton which include, but are not limited to, landscaping, pathways, driveways, decks, pergolas, fencing, letter boxes, pool, water features and BBQ. Images may depict upgraded items which include, but are not limited to, fireplaces, window furnishings, light fittings, floor coverings, alarm systems, air conditioning, doors and feature tiling. Masterton reserves the right to revise plans, specifications and pricing without notice. All plans and images are subject to copyright protection. Please contact a sales consultant for more information. Masterton Homes Pty Ltd ABN 52 002 873 047 BLicence 35558C

1115