

STIRLING

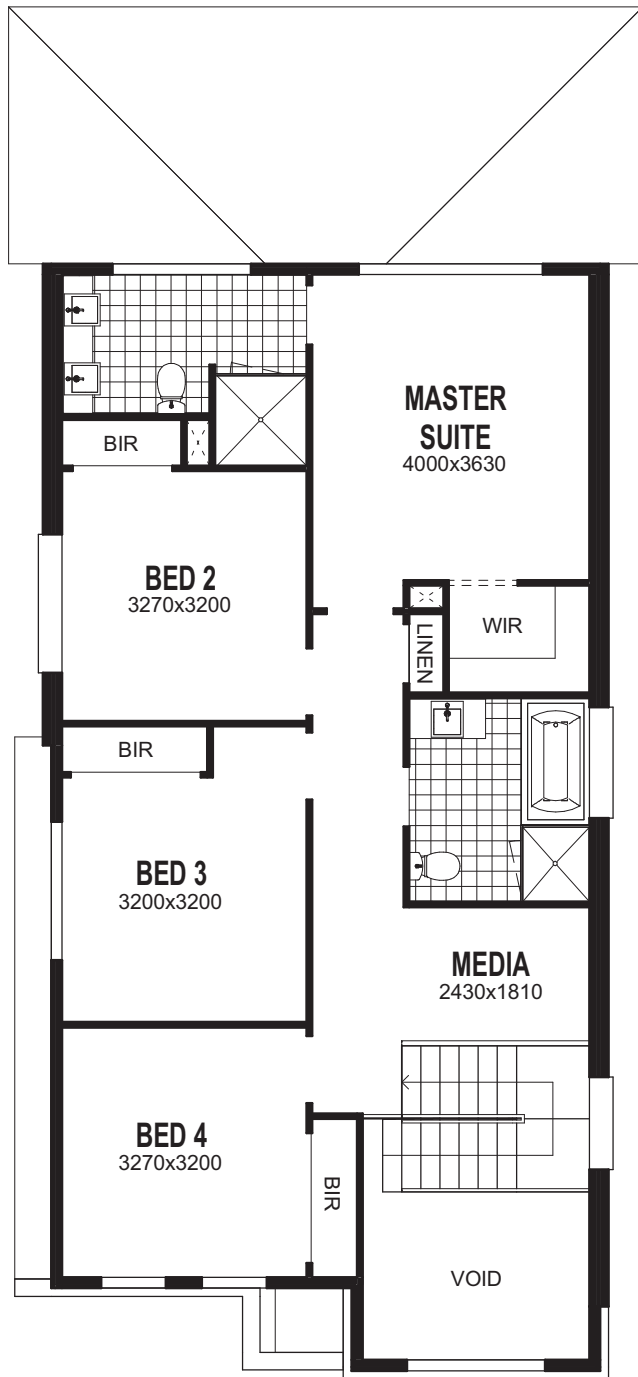
SHOWN WITH TRADITIONAL FACADE



Ground Floor



First Floor



24.75 squares
Total Area 229.97m²

Ground Floor 100.42m², First Floor 100.74m²

Garage 19.23m², Alfresco 8.31m², Porch 1.27m²

Overall Width Ground Floor 7.770m, Overall Depth Ground Floor 17.500m

Overall Width First Floor 7.400m, Overall Depth First Floor 14.380m

Please see conditions on back page



MASTERTON