

# Seaview.



**Allow yourself to imagine the lifestyle you've always wanted, in the home you deserve!**

Designed to suit sites that slope away from the road, the Seaview 321 is set over three stylish levels, with only a half-set of stairs between each floor. This large home features five well-separated bedrooms including the master with spacious ensuite and walk-in robe, and a designated ground-floor guest bedroom with its own powder room.

With a private office or media room, entertainer's lounge with spacious balcony, open-plan main living zone and alfresco dining area, the Seaview 321 has your family's lifestyle needs covered.

Seaview Designs offer individually crafted facades that will inspire you by providing a choice of homes that reflect your personal lifestyle and preferences.

Welcome **home.**

**G.J. Gardner.** HOMES

## Seaview facade options.

G.J. Gardner's tailored facades give you the opportunity to personalise your home. With Executive, Classic, Resort & Urban facades to choose from, you can bring your home to life, making it as individual as you are!

CLASSIC



RESORT



URBAN



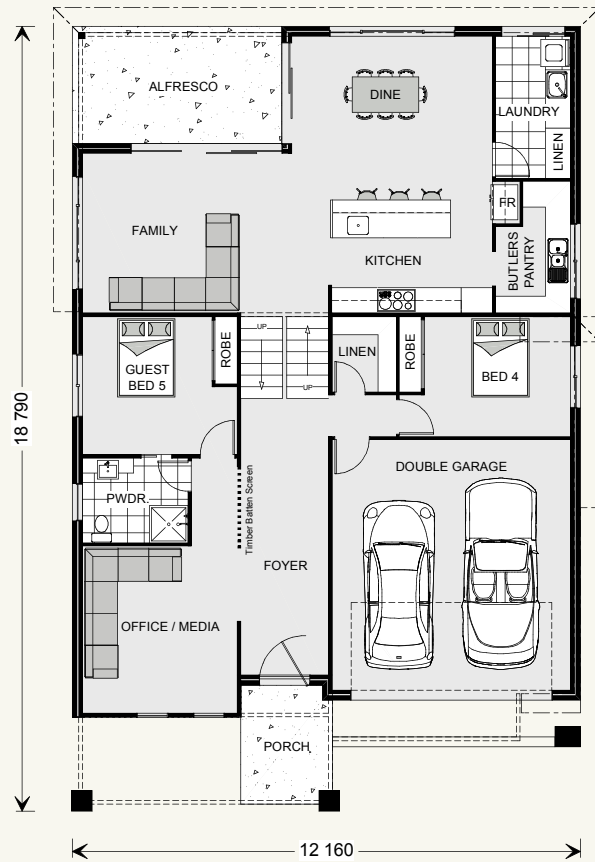
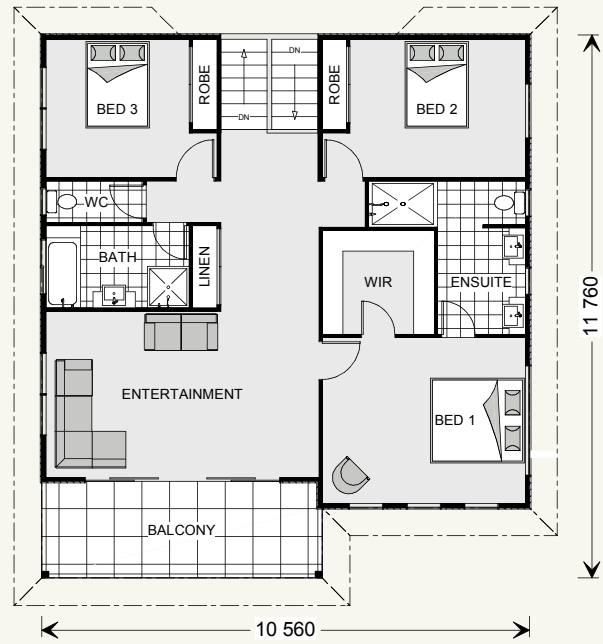
Images may depict fixtures, finishes and features not supplied by G.J. Gardner Homes. These items include planter boxes, retaining walls, water features, pergolas, screens and decorative landscaping items such as fencing and outdoor kitchens and barbecues.

## Seaview 321.

5  3  2 

### FEATURES

- + Huge open-plan family room
- + Lounge / media room
- + Entertainment room
- + Kitchen with butler's pantry



### SPECIFICATIONS

#### Floor Area-Ground

Living:	145.8 m <sup>2</sup>
Garage:	37.2 m <sup>2</sup>
Alfresco:	14.0 m <sup>2</sup>
Porch:	6.2 m <sup>2</sup>
<b>Total:</b>	<b>203.2 m<sup>2</sup></b>
<b>Width:</b>	<b>12.16 m</b>
<b>Length:</b>	<b>18.79 m</b>

#### Floor Area-Upper

Living:	104.8 m <sup>2</sup>
Balcony:	12.6 m <sup>2</sup>
<b>Total:</b>	<b>117.4 m<sup>2</sup></b>

#### Total Area

<b>Total:</b>	<b>320.6 m<sup>2</sup></b>
---------------	----------------------------

### NOTES

---



---



---



---

---

**Locals always  
at hand.**

Designing and building your ideal home is an exciting experience, and when you partner with professional and established builders – G.J. Gardner Homes, the journey will be fulfilling and rewarding.



Internal photographs are from different G.J. Gardner Homes to those featured in this brochure.

Contact us on **132 789**  
or visit [gjjardner.com.au](http://gjjardner.com.au)

**G.J. Gardner.** HOMES