

# PARAGON 204



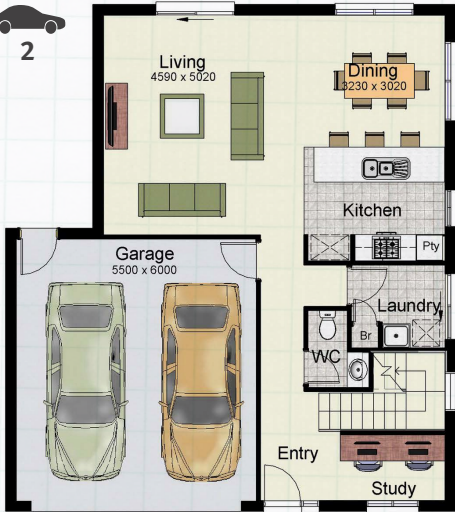
Optional Urban Facade Shown

**4**

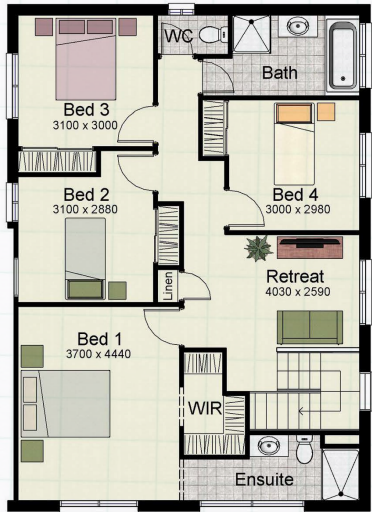
**2.5**

**2**

<b>GF Residence</b>	72.85m <sup>2</sup>
<b>FF Residence</b>	95.18m <sup>2</sup>
<b>Garage</b>	36.21m <sup>2</sup>
<b>Total</b>	<b>204.24m<sup>2</sup></b>
	<b>(21.98sqs.)</b>
<b>Width</b>	10.30m
<b>Length</b>	11.58m



Ground Floor



First Floor



Coda Facade Shown



Attica Facade Shown

THE  
**Milestone**  
RANGE

FROM HOTONDO HOMES



*A great find*

Call 1800 677 156 or visit [www.hotondo.com.au](http://www.hotondo.com.au)

\* The floor plans shown are provided for illustrative purposes only. They are not drawn to scale. The dimensions provided of "width" and "length" are the actual dimensions of the completed house including Alfresco areas. No allowance has been made for any council regulations or estate requirements. It is the home owner's responsibility to ensure that the house will fit on their land and that all applicable council regulations and estate requirements are met. The image of each facade is for illustrative purposes only and may contain items that are examples of upgrade options which may be included at additional cost, for example: Panel lift garage door, front entry door, outdoor light, all external paving and tile and floor coverings. Images may also contain items not supplied by Hotondo Homes including all landscaping, furniture, wall hangings.