

Paddington.



Allow yourself to imagine the lifestyle you've always wanted, in the home you deserve!

Make this home your personal sanctuary. Epitomising quality living for the whole family, the Paddington design is exclusive to G.J. Gardner Homes.

Here are the key ingredients for Australian living: intimacy and relaxation, family living areas awash with natural light and plenty of room to have a casual dinner with friends. Afterward, unwind in the separate media room where there is enough privacy to indulge in the best of contemporary entertainment.

This home offers quality living solutions throughout and connectivity between the living areas and the stylish gourmet kitchen which creates a seamless indoor/outdoor lifestyle.

The Paddington Design offers individually crafted facades that will inspire you by providing a choice of homes that reflect your personal lifestyle and preferences.

Contact us on **132 789**
or visit **gjpgardner.com.au**

Welcome **home.**

G.J. Gardner. HOMES

Paddington facade options.

G.J. Gardner's tailored facades give you the opportunity to personalise your home. With Executive, Resort, Classic and Urban facades to choose from, you can bring your home to life, making it as individual as you are!

EXECUTIVE



RESORT



CLASSIC



URBAN



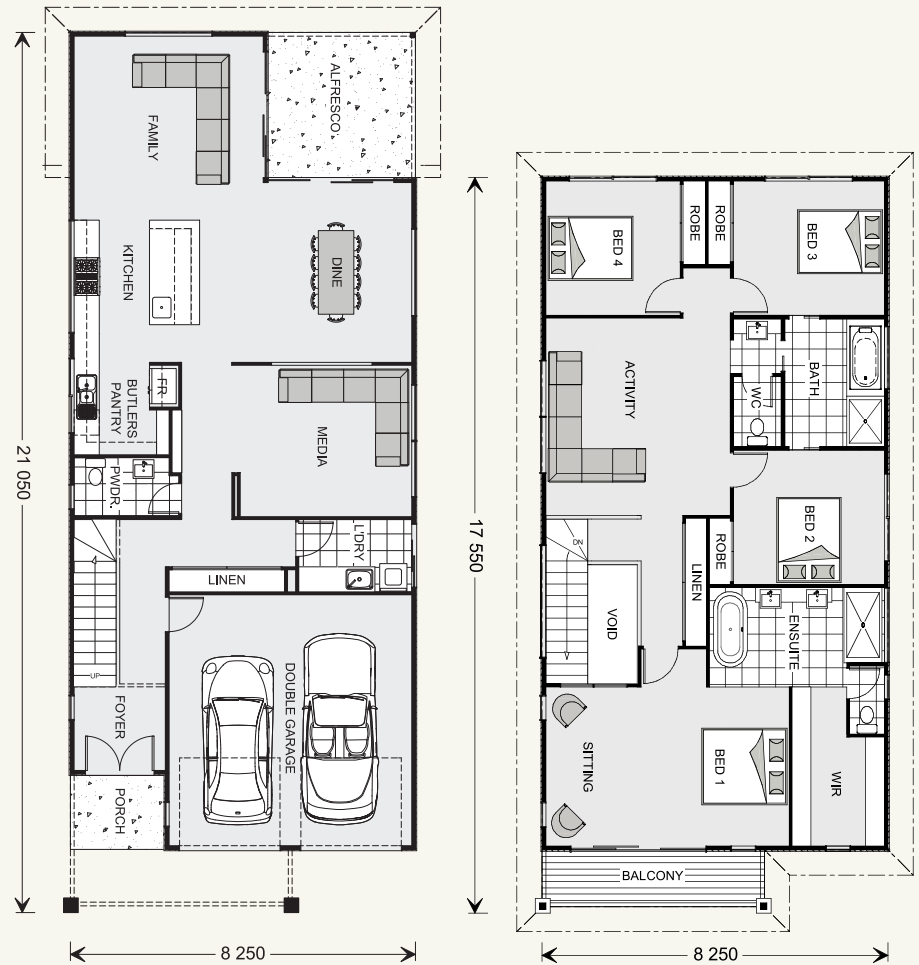
Images may depict fixtures, finishes and features not supplied by G.J. Gardner Homes. These items include planter boxes, retaining walls, water features, pergolas, screens and decorative landscaping items such as fencing and outdoor kitchens and barbecues.

Paddington 314.

4  2.5  2 

FEATURES

- + Lifestyle alfresco
- + Activity room
- + Open plan family room
- + Butler's pantry



SPECIFICATIONS

Floor Area-Ground

Living:	114.9 m ²
Garage:	38.2 m ²
Alfresco:	12.4 m ²
Porch:	4.1 m ²
Total:	169.6 m ²

Floor Area-Upper

Living:	132.3 m ²
Balcony:	7.2 m ²
Total:	139.5 m ²

Total Area

Total:	309.1 m ²
--------	----------------------

Width: 8.25 m

Length: 21.05 m

NOTES

**Locals always
at hand.**

Designing and building your ideal home is an exciting experience, and when you partner with professional and established builders – G.J. Gardner Homes, the journey will be fulfilling and rewarding.



Internal photographs are from different G.J. Gardner Homes to those featured in this brochure.

Contact us on **132 789**
or visit **gjpgardner.com.au**

G.J. Gardner. **HOMES**