

# Pacific Express.



## **Allow yourself to imagine the lifestyle you've always wanted, in the home you deserve!**

One of our most space-efficient home designs, the Pacific 205 features a clever floorplan that makes the most of family life. A welcoming foyer opens onto the private master bedroom with stylish ensuite and walk-in robe. As you walk down the hall you'll pass a large media room before entering the heart of the home – a spacious, open-plan living area comprising kitchen with breakfast bar, dining, lounge and alfresco areas. Three remaining bedrooms share a stylish bathroom and central activity room.

The Pacific Express offers individually crafted facades that will inspire you by providing a choice of homes that reflect your personal lifestyle and preferences.

Call **132 789**  
or visit **[gjjgardner.com.au](http://gjjgardner.com.au)**

Welcome **home.**

**G.J. Gardner.** HOMES

CLASSIC



BEACH



EXECUTIVE



BAROSSA



METRO



RESORT



TRADITIONAL



URBAN



## Pacific facade options.

G.J. Gardner's tailored facades give you the opportunity to personalise your home. With Classic, Beach, Executive, Barossa, Metro, Resort, Traditional and Urban facades to choose from, you can bring your home to life, making it as individual as you are!

Images may depict fixtures, finishes and features not supplied by G.J. Gardner Homes. These items include planter boxes, retaining walls, water features, pergolas, screens and decorative landscaping items such as fencing and outdoor kitchens and barbecues.

## Pacific 205.



### FEATURES

- + Four bedrooms, including ensuited master
- + Dedicated activity & media rooms
- + Open plan kitchen, dining & living area
- + Covered alfresco
- + Double garage
- + Choice of eight facades

### SPECIFICATIONS

**Width:** 10.5 m

**Length:** 20.16 m

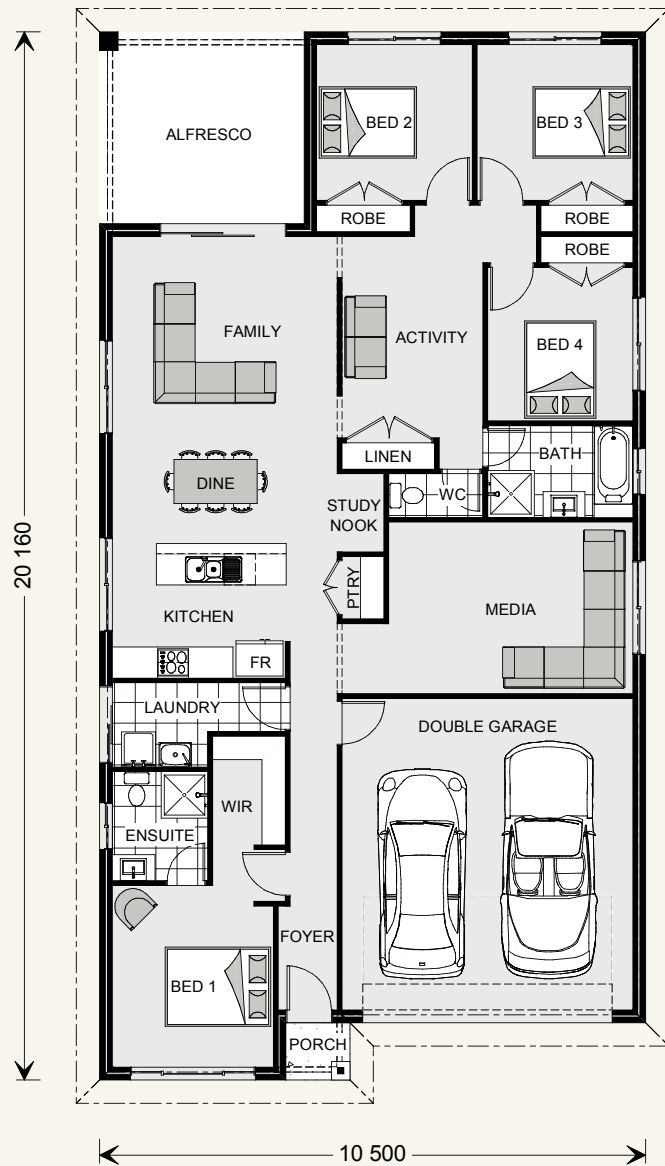
**Living:** 153.1sqm

**Garage:** 36.4 sqm

**Alfresco:** 14.5 sqm

**Porch:** 1.4 sqm

**Total:** 205.4 sqm



\*Classic Floorplan Shown

### NOTES

---

---

---

---

---

**Locals always  
at hand.**

Designing and building your ideal home is an exciting experience, and when you partner with professional and established builders – G.J. Gardner Homes, the journey will be fulfilling and rewarding.



Internal photographs are from different G.J. Gardner Homes to those featured in this brochure.

Call **132 789**  
or visit **[gjgardner.com.au](http://gjgardner.com.au)**

**G.J. Gardner.** **HOMES**