

# La Trobe Express.



## **Allow yourself to imagine the lifestyle you've always wanted, in the home you deserve!**

Designed with the growing family in mind, the La Trobe 253 is ideally suited to urban or estate living. A central, open-plan living area wraps around a covered alfresco, providing plenty of natural light and cooling cross breezes. The master suite is positioned to the rear of the home for privacy and garden views, while a dedicated kids' zone includes three bedrooms centred around a stylish bathroom, built-in study and activity room. A double garage completes the picture.

The La Trobe Express offers individually crafted facades that will inspire you by providing a choice of homes that reflect your personal lifestyle and preferences.

Call **132 789**  
or visit **[gjgardner.com.au](http://gjgardner.com.au)**

Welcome **home.**

**G.J. Gardner.** HOMES



CLASSIC



BEACH



EXECUTIVE



HAMPTONS



METRO



RESORT



TRADITIONAL



URBAN



## La Trobe facade options.

G.J. Gardner's tailored facades give you the opportunity to personalise your home. With Classic, Beach, Executive, Hamptons, Metro, Resort, Traditional and Urban facades to choose from, you can bring your home to life, making it as individual as you are!

Images may depict fixtures, finishes and features not supplied by G.J. Gardner Homes. These items include planter boxes, retaining walls, water features, pergolas, screens and decorative landscaping items such as fencing and outdoor kitchens and barbecues.

## La Trobe 253.

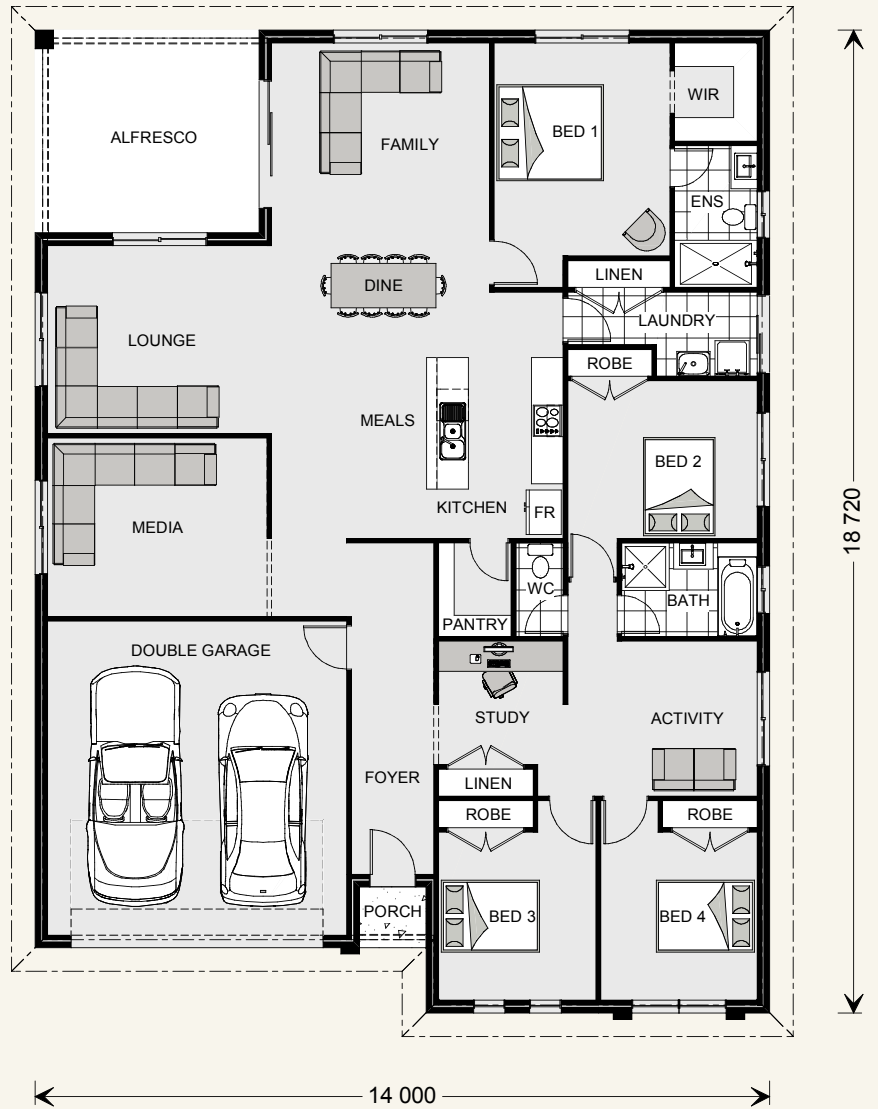


### FEATURES

- + Four bedrooms
- + Two bathrooms
- + Open-plan main living with alfresco
- + Media room, study & kids' activity room
- + Double garage
- + Choice of eight facades

### SPECIFICATIONS

<b>Width:</b>	14.0 m
<b>Length:</b>	18.72 m
<b>Living:</b>	197.6sqm
<b>Garage:</b>	37.2 sqm
<b>Alfresco:</b>	16.5 sqm
<b>Porch:</b>	1.5 sqm
<b>Total:</b>	252.8 sqm



\*Classic Floorplan Shown

### NOTES

---



---



---



---



---

**Locals always  
at hand.**

Designing and building your ideal home is an exciting experience, and when you partner with professional and established builders – G.J. Gardner Homes, the journey will be fulfilling and rewarding.



Internal photographs are from different G.J. Gardner Homes to those featured in this brochure.

Call **132 789**  
or visit **[gjgardner.com.au](http://gjgardner.com.au)**

**G.J. Gardner.** **HOMES**