

Kentville 24

Clarendon
Homes



Single Storey
Range

KINGSLEY Facade with optional upgrades
219.2m² / 24sq



KINGSLEY



CONTEMPORARY



ELITE



KINGSLEY



URBAN



RIVIERA



KINGSLEY



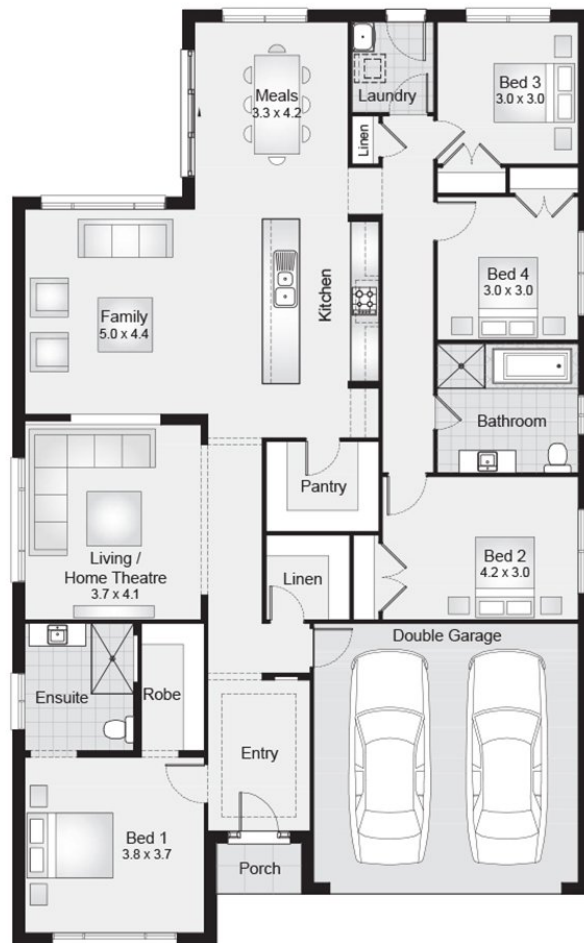
TRADITIONAL

Fits blocks from 15m wide

4 2 2

| | | | | | | | |
|--------------|-------|--------|-------|--------------|--------|---------------------------|-------|
| House Length | 19.8m | Garage | 33.9m | Ground Floor | 183.7m | Total Area m ² | 219.2 |
| House Width | 12.2m | Porch | 1.9m | | | Total Area Squares | 24 |

Block width suitability may vary by Council



*Note: Facades as standard are face brick from the Builders standard range, with standard profile windows and roof tiling relevant to the specific facade design. All other features demonstrated in photographs and renderings or on display homes are optional upgrades to the standard facade. Floorplans and sizes quoted are based on the Traditional facade. We reserve the right to include a surcharge when building in regional and/or certain council areas. Plans, prices, specifications, product model numbers and suppliers may change without notice. Changed items may vary slightly in colour, style and finish to the display home. Lot width suitability is a guide only and dependent on individual council requirements. Homes on display feature optional extras, ask a sales consultant as to which items on display incur an additional charge to the price of the home. This product is offered by Clarendon Homes (NSW) Pty Ltd B L No. 2298C. E&OE. ABN 18 003 892 706. T6585 - 08/15