

HARMONY ELITE

SHOWN WITH UPGRADED MODERN 2 FACADE

Single Storey Collection



Image Illustrative Only



MASTERTON

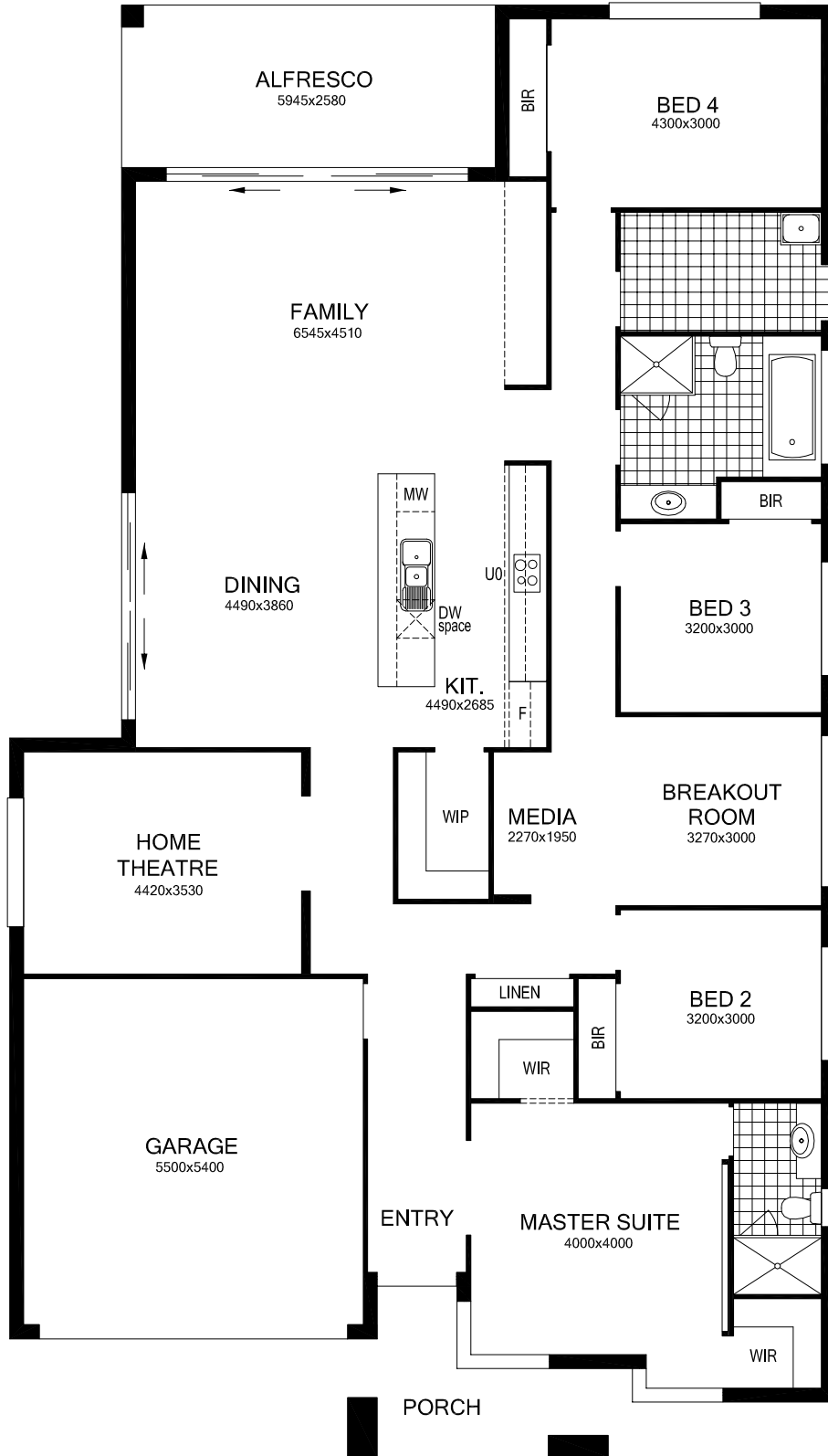
www.masterton.com.au or 1300 44 66 37

Jim wouldn't have it any other way

Images in this brochure may depict items not supplied by Masterton which include, but are not limited to, landscaping, pathways, driveways, decks, pergolas, fencing, letter boxes, pool, water features and BBQ. Images may depict upgraded items which include, but are not limited to, fireplaces, window furnishings, light fittings, floor coverings, alarm systems, air conditioning, doors and feature tiling. Alternative facade upgrades available. No applied finishes are included such as render, moroka, bag and paint, stack stone or tiles. These are optional upgrades. Please contact a Sales Consultant for more information.

HARMONY ELITE

SHOWN WITH UPGRADED MODERN 2 FACADE



28.94 squares

Total Area 268.89m²

Living Area 213.43m², Alfresco 15.34m²

Porch 7.73m², Garage 32.39m²

Overall Width 13.13m, Overall Depth 23.08m

Please see conditions on back page



MASTERTON

HARMONY ELITE 5 BED

SHOWN WITH TRADITIONAL FACADE

'A'

5

2

2



28.23 squares

Total Area 262.23m²

Living Area 213.43m², Alfresco 15.34m²

Porch 1.07m², Garage 32.39m²

Overall Width 13.13m, Overall Depth 22.20m

Please see conditions on back page



MASTERTON

HARMONY ELITE GRANDE RESORT SUITE

'B'

SHOWN WITH TRADITIONAL FACADE



28.23 squares

Total Area 262.23m²

Living Area 213.43m², Alfresco 15.34m²

Porch 1.07m², Garage 32.39m²

Overall Width 13.13m, Overall Depth 22.20m

Please see conditions on back page



MASTERTON

HARMONY ELITE RESORT SUITE

SHOWN WITH TRADITIONAL FACADE



28.23 squares

Total Area 262.23m²

Living Area 213.43m², Alfresco 15.34m²

Porch 1.07m², Garage 32.39m²

Overall Width 13.13m, Overall Depth 22.20m

Please see conditions on back page



MASTERTON

HARMONY ELITE MBTR

(MASTER BED TO REAR)

SHOWN WITH TRADITIONAL FACADE

‘D’

F 4

B 2

A 2



28.23 squares

Total Area 262.23m²

Living Area 215.15m², Alfresco 13.62m²

Porch 1.07m², Garage 32.39m²

Overall Width 13.13m, Overall Depth 22.20m

Please see conditions on back page



MASTERTON

HARMONY ELITE

with **POWDER ROOM & LINEN**
SHOWN WITH **TRADITIONAL FACADE**



28.23 squares

Total Area 262.23m²

Living Area 213.43m², Alfresco 15.34m²

Porch 1.07m², Garage 32.39m²

Overall Width 13.13m, Overall Depth 22.20m

Please see conditions on back page



MASTERTON

HARMONY ELITE

with **ADDITIONAL ENSUITE TO BED 4**

SHOWN WITH TRADITIONAL FACADE

'F'



28.23 squares

Total Area 262.23m²

Living Area 213.43m², Alfresco 15.34m²

Porch 1.07m², Garage 32.39m²

Overall Width 13.13m, Overall Depth 22.20m

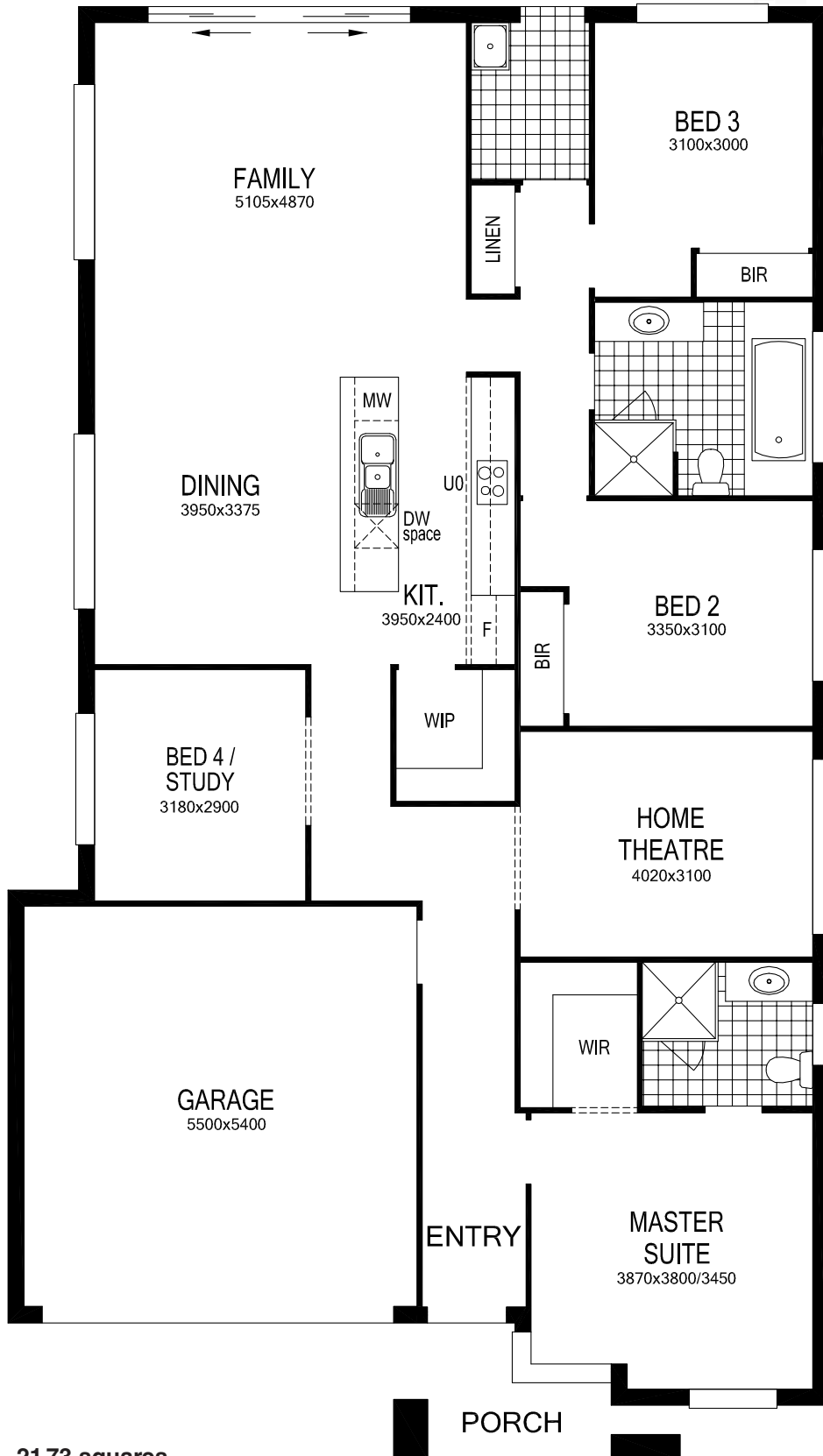
Please see conditions on back page



MASTERTON

HARMONY PREMIER

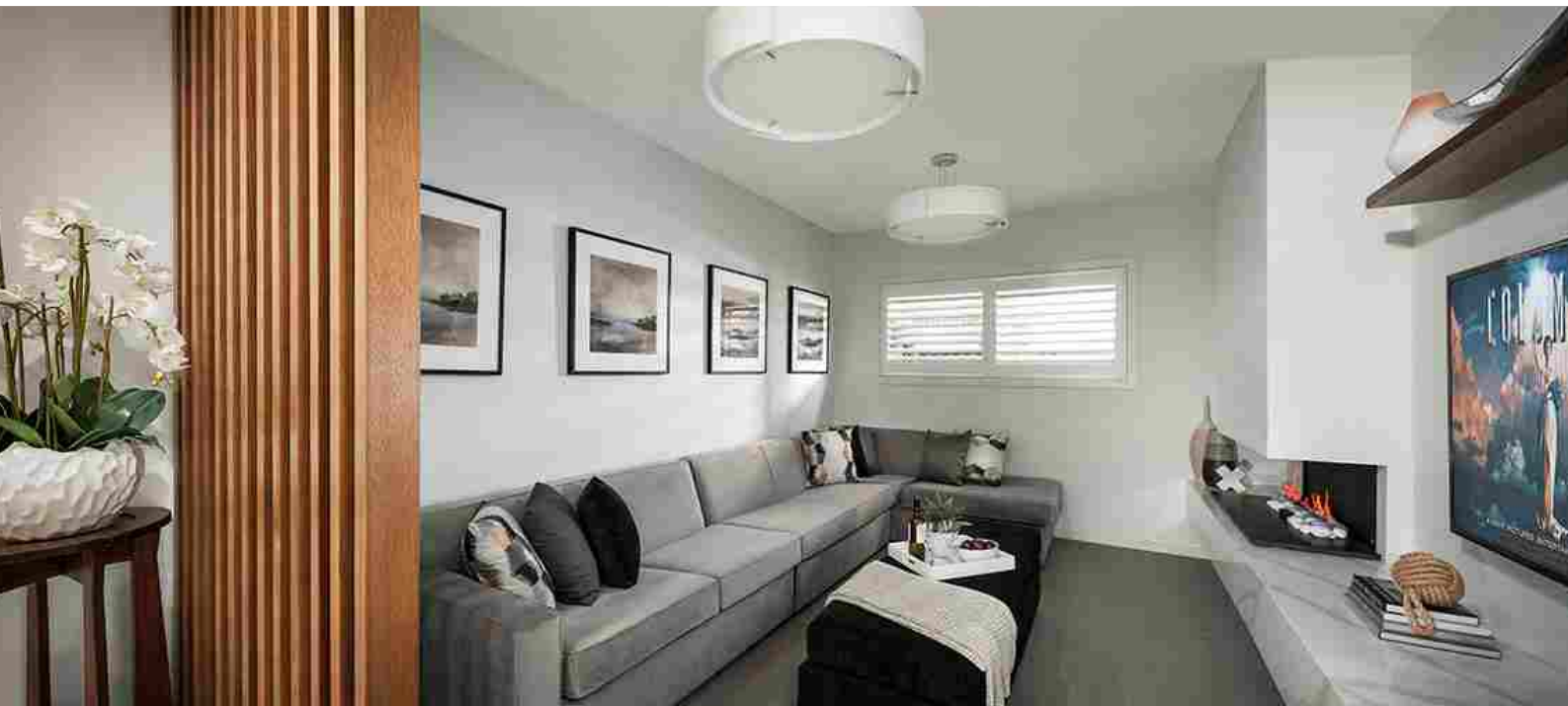
SHOWN WITH UPGRADED MODERN 2 FACADE



21.73 squares
Total Area 201.90m²
Living Area 164.18m²
Porch 5.30m², Garage 32.42m²
Overall Width 11.275m, Overall Depth 19.970m

Please see conditions on back page





ABOUT MASTERTON

JIM WOULDN'T HAVE IT ANY OTHER WAY

WE BUILT OUR REPUTATION ONE HOUSE AT A TIME

More than 50,000 homeowners have chosen a Masterton home since 1962. We're now one of the largest and most respected home builders in Australia, something we're very proud of and value enormously.

We've maintained our leadership in the industry with a design team that are continually developing new designs to meet the changing lifestyles and expectations of today's customers. Of course, we're continually incorporating and adapting to new building technologies, so that we live up to our promise of "Building Tomorrow's Homes, today"

MASTERTON DISPLAY VILLAGE

Many of our most popular designs are on show at our seven acre Warwick Farm Display Village, which is conveniently located on the Hume Highway at Warwick Farm.

Enjoy strolling through our landscaped gardens, inspecting your future home, and let one of our friendly and experienced staff help you with any questions you may have about your perfect new home.

COLOUR SELECTION STUDIO

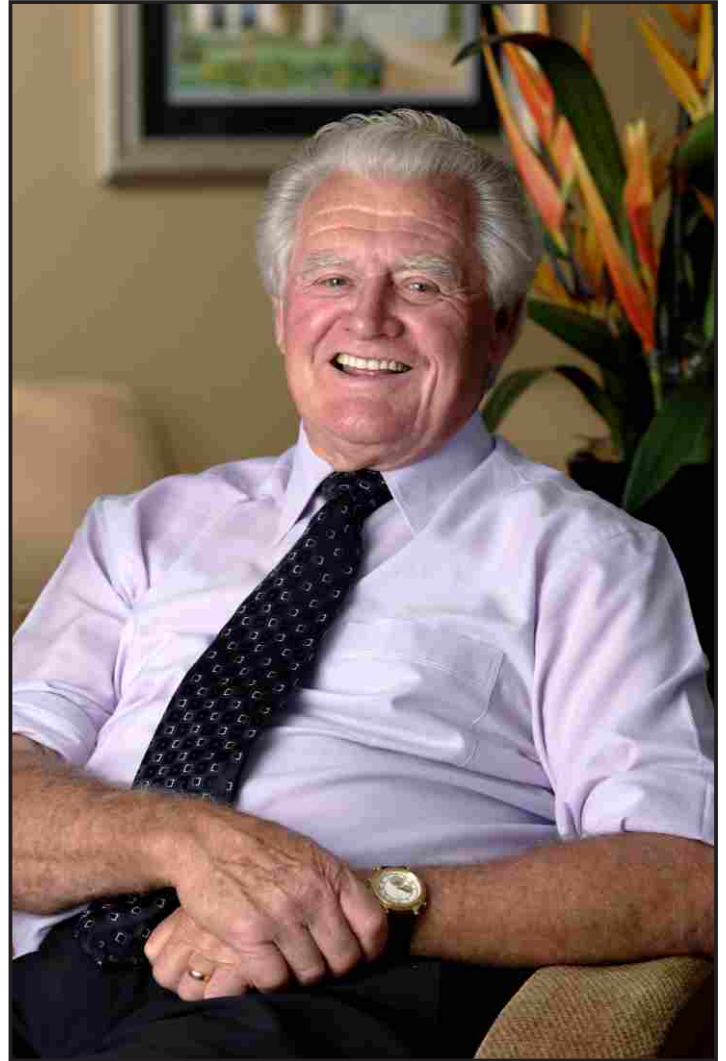
At our exciting style selection centre 'The Masterton Colour Selection Studio, at the Warwick Farm Display Village, finalise your external and internal choices with our professional in-house consultants, helping you with all the finishing touches that truly turn a house into your home.

These selections include bathroom and kitchen products, air conditioning, security systems, carpet, timber flooring, stairs and a lot more.

MASTERTON'S "KNOCK DOWN REBUILD"

Love the neighbourhood but tired of your house? If you own a house that's getting a little old and dull, why not replace it with a brand new Masterton Home on your existing block?

We'll give you all the advice you need, including the design of your new home and how to make more of the available area. One of our trained consultants will help develop the perfect solution for you.



Our Founder - Jim Masterton

MASTERTON
KDR
KNOCKDOWNREBUILD



MASTERTON



One of Australia's Most Awarded Builders

Facades: Refer to the *Single Storey Facade Selection* brochure
 All floor plans can be mirror reversed

Masterton Display Village: Cnr Sappho Road & Hume Highway Warwick Farm NSW 2170
 For your nearest display village visit www.masterton.com.au or call 1300 44 66 37

Conditions

Base price includes traditional facade. Alternative facade upgrades available. No applied finishes are included such as render, moroka, bag and paint, stack stone or tiles. These are optional upgrades. Images in this brochure may depict items not supplied by Masterton which include, but are not limited to, landscaping, pathways, driveways, decks, pergolas, fencing, letter boxes, pool, water features and BBQ. Images may depict upgraded items which include, but are not limited to, fireplaces, window furnishings, light fittings, floor coverings, alarm systems, air conditioning, doors and feature tiling. Masterton reserves the right to revise plans, specifications and pricing without notice. All plans and images are subject to copyright protection. Please contact a sales consultant for more information. Masterton Homes Pty Ltd ABN 52 002 873 047 BLicence 35558C