

Forestdale 143.



Allow yourself to imagine the lifestyle you've always wanted, in the home you deserve!

Designed for 10 metre wide sites, G.J. Gardner's Forestdale 143 delivers a compact floorplan that is big on family lifestyle.

An open-plan family living space forms the heart of the home and flows out to an alfresco dining area, allowing you to relax and entertain in style all year round. The master bedroom features a walk-through robe and ensuite, with the other bedrooms sharing a central main bathroom with separate WC. From the large island bench to the designated laundry space, the Forestdale 143 has been designed to take the hassle out of a busy family lifestyle.

The Forestdale offers individually crafted facades that will inspire you by providing a choice of homes that reflect your personal lifestyle and preferences.

Welcome **home.**

G.J. Gardner. HOMES

Forestdale 143 facade options.

G.J. Gardner's tailored facades give you the opportunity to personalise your home.

With Executive, Classic, Resort & Urban facades to choose from, you can bring your home to life, making it as individual as you are!

CLASSIC



EXECUTIVE



URBAN



Images may depict fixtures, finishes and features not supplied by G.J. Gardner Homes. These items include planter boxes, retaining walls, water features, pergolas, screens and decorative landscaping items such as fencing and outdoor kitchens and barbecues.

Forestdale 143.



FEATURES

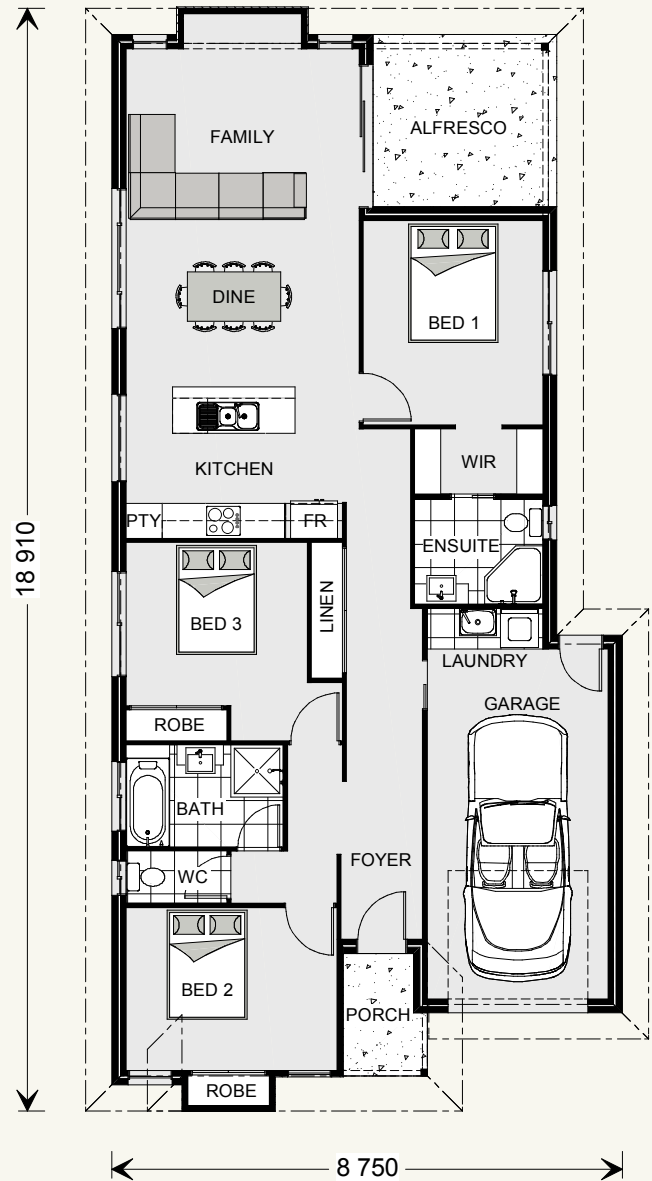
- + Open plan living space that flows onto the alfresco and outdoor living spaces
- + Three bedrooms, well separated for privacy
- + Master bedroom with ensuite and walk-through robe
- + Designed to fit on 10 metre wide sites

SPECIFICATIONS

Living:	108.3 m ²
Garage:	22.9 m ²
Alfresco:	9.3 m ²
Porch:	2.8 m ²
Total:	143.3 m ²

TOTAL AREA

Width:	8.75 m
Length:	18.91 m



NOTES

Locals always at hand.

Designing and building your ideal home is an exciting experience, and when you partner with professional and established builders – G.J. Gardner Homes, the journey will be fulfilling and rewarding.



Internal photographs are from different G.J. Gardner Homes to those featured in this brochure.

Contact us on **132 789**
or visit gjjardner.com.au